



INDIGENOUS PEOPLES OF THE NORTH, SIBERIA AND FAR EAST

40 PEOPLES IN 25 REGIONS

- RECOGNIZED BY THE RUSSIAN FEDERATION CONSTITUTION
- TOTAL POPULATION – 270.000
- SMALL NUMBERED/MINORITY ON TRADITIONAL LANDS
(7 PEOPLES – LESS 1000, 12 – LESS 2000)
- TRADITIONAL LIFE-STYLE AND SUBSISTENCE ECONOMY
(DOMESTIC REINDEER HERDING, HUNTING, FISNING, WILD PLANTS GATHERING)

DISCOVER ABORIGINAL RUSSIA



THE UDEGE

PAST



PRESENT



FUTURE



Udege background

- Udege means Forest People
- Tungus (Altay) language family
- Since 19 century – Primorsky and Khabarovsk regions
- Nomadic tribes
- Hunting (elk, deer, wild boar, bear)
- Trapping (sable, minx, otter)
- Fishing (salmon, river fish)
- Wild plants (berries, nuts, herbal grass, garlic, fern)

Current situation

- 1 700 population left
- 5 communities (3 – Primorsky region; 2- Khabarovsk one)
- 4 Udege language groups left (was 8)
- Traditional life-style – hunting, trapping, fishing, wild plants

Primorsky Region, Russian Far East



BIKIN RIVER – Heart of Ussuri Taiga and Home of Udege





Bikin biodiversity and wilderness



USSURI TAIGA AND BIKIN

- 15 Red Book species of vascular plants
- 60 mammal species (including Brown bear, Himalayan black bear and Amur tiger)
- 70 bird species including 18 Red Book species
- 7 species of amphibians
- 10 species of reptiles
- 51 species of fish
- 27 of insect species found here are listed in the Russian Red Data Book.





タイガの森フォーラム発足記念イベント(2009年12月2日)



International Value

“The combination of glacial history, climate and relief has allowed the development of the richest and most unusual temperate forests in the world.”

(from UNESCO/IUCN evaluation report)

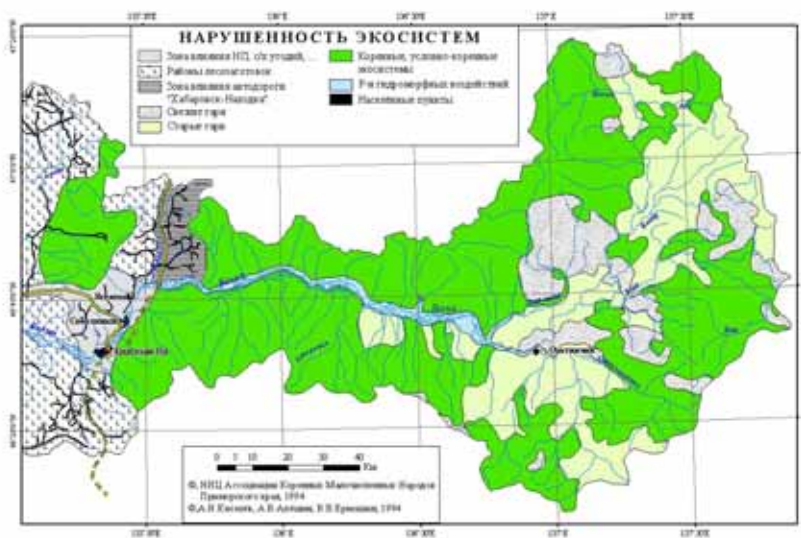
Commercial logging – threat to Bikin Taiga and Udege livelihood



タイガの森フォーラム発足記念イベント(2009年12月2日)



Bikin Taiga ecosystem



Traditional Nature Use – basis of Bikin ecosystem and Udege development



Sacred Sites and

traditional values



Wood art and vision



Dialogue and Partnership building

- Government (regional and federal)
- Business (timber companies)
- NGO Alliance (WWF, Greenpeace, FoE...)
- Taiga Forum



International relations and WHS

Boreal ancient forest covers about 50 % of the Russian Siberia and Far East. Timber logging is the serious threat for biodiversity and ecosystems.

The Udege are the Forest People. Their welfare depends on the environment health.

Japan is one the key buyer of the Far Eastern ancient forest products. We need your understanding, new ecological vision and support.

Taiga Forum is the one of the tool to promote Bikin, Ussuri Taiga and Udege values.

Tiger Summit (Vladivostok, 2010)
COP X (Nagoya, 2010)

UNESCO World Heritage Status (WHS) is the final destination.



Udege and Japanese visitors



FUTURE DEVELOPMENT

- IT'S NOT ONLY MONEY
- HEALTHY ENVIRONMENT
- SOCIAL JUSTICE
- CULTURAL SECURITY

EARTH DOES NOT BELONG TO US -
WE BELONG TO THE EARTH



Thanks for your attention

Arigato

Asasa

Rodion Sulyandziga
ritc@mail.ru
www.csion.ru

WELCOME TO UDEGE HOME

